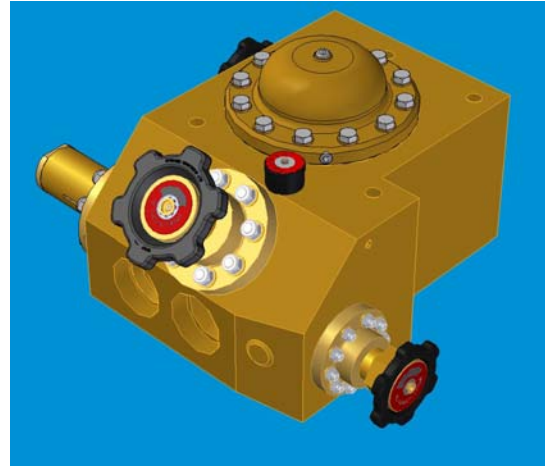


Product Overview

• High Flow Engine Start Reducing Station

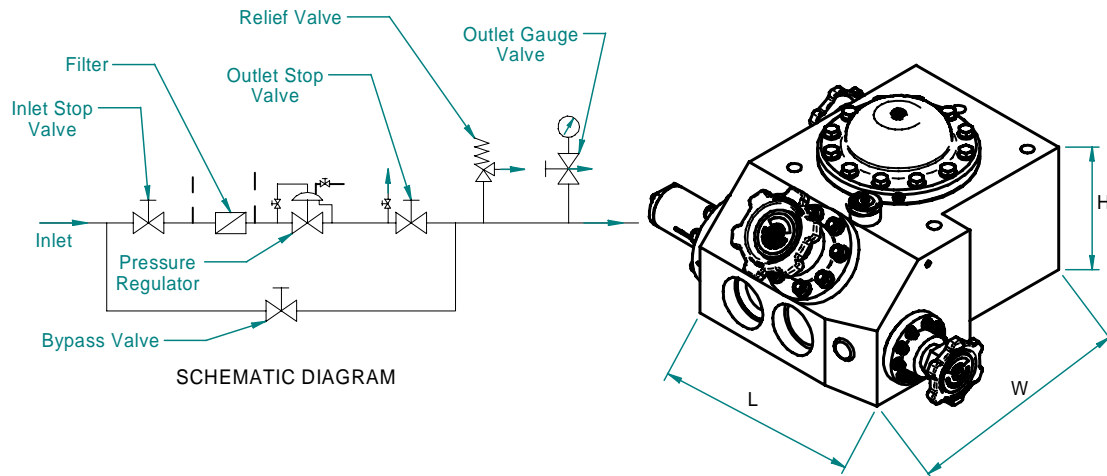
Features

- Isolators and bypass facility allows supply of air during regulator maintenance.
- Non-isolatable relief valve protections of downstream system and pipe work.
- Downstream pressure gauge isolator with vent for gauge blow-down.
- 50 micron inlet filter protects regulator and downstream equipment.
- Cartridge principle allows full maintenance of all valves with block in situ.
- Material selection provides good resistance to corrosive marine environment.



Specifications

- Application: Brief bursts of high flow energy for engine start application.
- Design Pressure: 6000 psig at 100 F
- Temperature Range: -4 to 240 Fahrenheit
- Max. Flow Rates: 7,975 SCFM with a limiting velocity of 5,476 ft/min
15,950 SCFM with a limiting velocity of 10,951 ft/min
34,064 SCFM allowing sonic velocity
[Calculations based on 575 psig inlet and 435 psig outlet pressure]
- Shock tested to Grade A medium-weight shock, Class 1, Type A Hull mounted, MIL-S901D
- Vibration tested to MIL-STD-167-1, Type 1



Drawing No.	Weight lbs (Est'd)	Inlet Pipe Size	Outlet Pipe Size	Block Dimensions		
				Length, L (Overall)	Width, W	Height, H
EXP 1539	1400	3"	3½"	30.4"	26"	15"