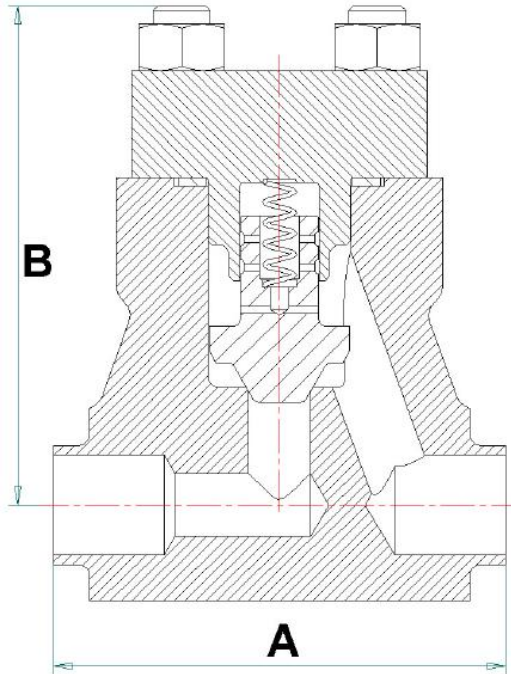


Series 50D Non-Bellows Sealed Valve - Straight Pattern Non-Return



Class 800 non-return valve to BS5352, standard bore, bolted bonnet.

Available with integral hard faced seat or screwed in stainless steel seat.

Butt weld end connections shown, also available as screwed, socket weld, flanged or special connection.



Dimensions				
Size DN	Dim A mm	Dim B mm	Weight Kg	Cv UKGPM
6	108	170	3	1.7
15	108	170	3	2.45
20	117	190	3	2.45
25	127	190	4.5	5.8
40	165	220	12	12.4
50	203	400	15	18.5

Maximum pressure / temperature ratings are restricted by the valve end connections and the body / bonnet materials. Shown are the maximum ratings for socket weld, butt weld and screwed ends to BS5352.

Materials can be changed to customer specifications. There are temperature restrictions on some materials, ie. C.St. ASTM A105 is not recommended for use above 425 °C.

If in doubt please ask, we will advise suitable materials for the temperature, pressure and media.

Component	Material	
	Carbon Steel Valve	Stainless Steel Valve
Body	C.St. ASTM A105	St.St. BS1503 304S11
Bonnet	C.St. ASTM A105	St.St. BS1503 304S11
Seat	St.St. Type 410 or integral Stellite HF	St.St. Type 410 or integral Stellite HF
Disk	St.St. Type 410 or Stellite HF	St.St. Type 410 or Stellite HF

Service Temperature °C	Service Pressure Bar g
-38 to +38	99
50	98
100	96
150	94
200	91
250	87
300	79
350	71
400	63
450	55
500	34