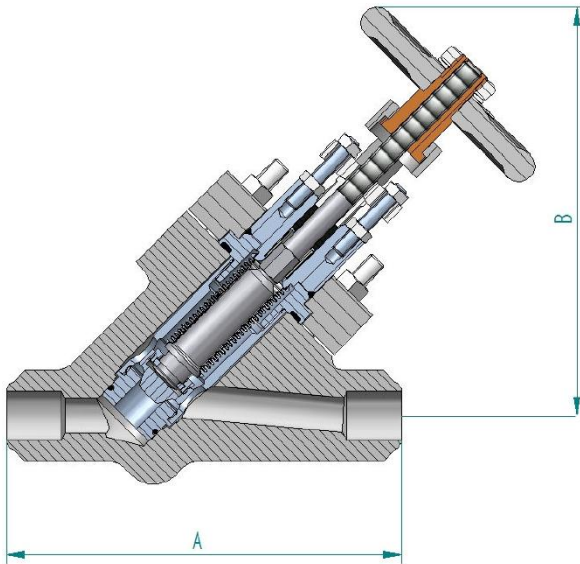


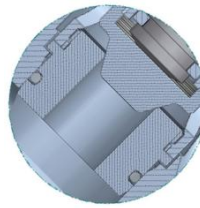
## Series 40B Bolted Bonnet Cartridge Valve - Oblique Pattern



Bellows sealed globe valve, standard bore, outside screw and yoke, non-rising handwheel, bolted bonnet. To BSEN15761 or nuclear class to ASME III available.

Valve can be supplied with actuation - electric or pneumatic plus controls. Extended spindles also available.

Butt weld end connections shown, also available as screwed, socket weld, flanged or special connection or manifold blocks.



Cartridge valve, seat and all seals are removed with the top assembly. This leaves only the body left in line.

Maintenance time reduced significantly. Increases safety, no danger of seals being lost down line or seat not being fitted.

Maximum pressure / temperature ratings are restricted by the valve end connections and the body / bonnet materials.

Valve design suitable for temperatures up to 320 °C.

Materials can be changed to customer specifications.

Valve Size	Dimensions (typical)							
	Class 600				Class 1500			
	Dim A mm	Dim B mm	Weight Kg	Cv UK Gal/min	Dim A mm	Dim B mm	Weight Kg	Cv UK Gal/min
DN6	165	220	11	2	229	242	13	2
DN15	165	220	11	5.8	229	242	13	5.8
DN20	190	220	11	5.8	229	245	13	5.8
DN25	216	230	12.5	11	254	260	15.5	11
DN40	241	320	30	30	305	350	35	30
DN50	292	390	35	54	368	420	40	54
DN80	356	490	230	153	381	540	250	153
DN100	432	502	270	267	457	562	295	267
DN150	559	760	298	690	610	820	320	690

Component	Material
Body & Bonnet	St.St. BSEN 10222-5 x2 CrNi 18-9 (1.4307) / ASME SA182 F304L
Seat	St.St. BSEN 10088-3 1.4307 / ASME SA479 304L
Seat Seal	Perlast or Kalrez seal
Disk	St.St. BSEN 10088-3 1.4307 / ASME SA479 304L
Stem	St.St. BSEN 10088-3 1.4307 / ASME SA479 304L
Bellows	St.St. Type 316L
Gland	Graphite

