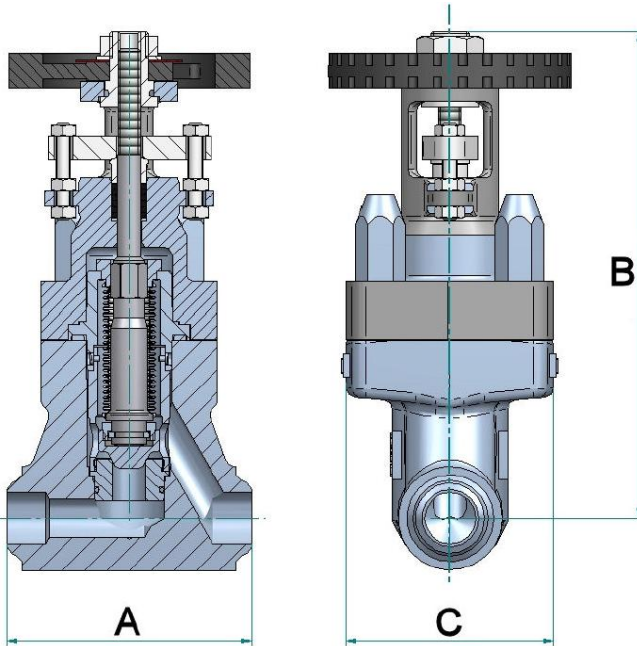


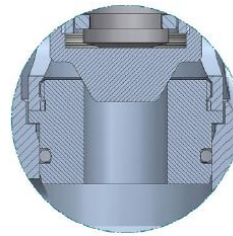
## Series 40A Bolted Bonnet Cartridge Valve - Straight Pattern



Class 600 bellows sealed globe valve, standard bore, outside screw and yoke, non-rising handwheel, bolted bonnet. To BSEN15761 or nuclear class to ASME III available.

Valve can be supplied with actuation - electric or pneumatic plus controls. Extended spindles also available.

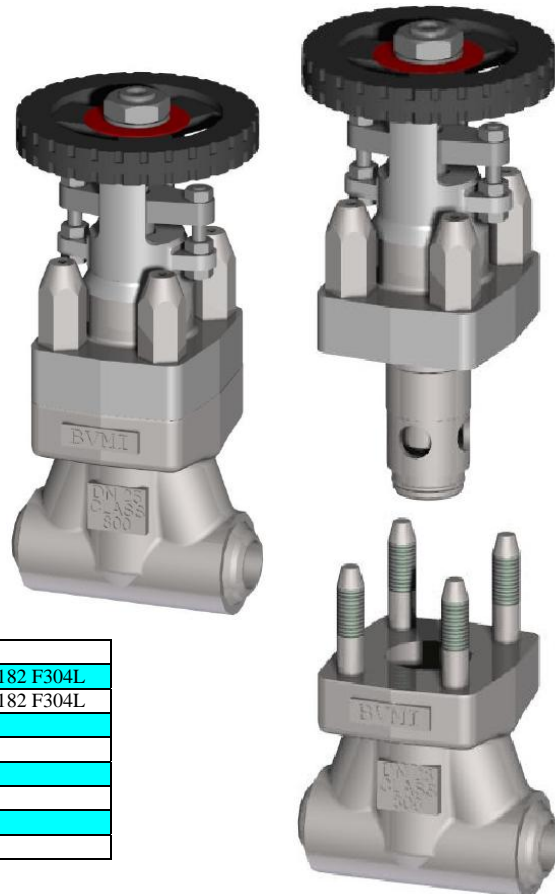
Butt weld end connections shown, also available as screwed, socket weld, flanged or special connection or manifold blocks.



Cartridge valve, seat and all seals are removed with the top assembly. This leaves only the body left in line. Maintenance time reduced significantly. Increases safety, no danger of seals being lost down line or seat not being fitted.

Maximum pressure / temperature ratings are restricted by the valve end connections and the body / bonnet materials. Valve design suitable for temperatures up to 320 °C. Materials can be changed to customer specifications.

Dimensions				
Size DN	Dim A mm	Dim B mm	Weight Kg	Cv UKGPM
6	108	243	9	1.7
15	108	243	9	2.45
20	117	243	9	2.45
25	127	256	9.6	5.8
40	165	368	24	12.4
50	203	400	25	18.5
80	356	500	202	37
100	406	521	240	76
150	559	780	278	260



Component	Material
Body	St.St. BSEN 10222-5 x2 CrNi 18-9 (1.4307) / ASME SA182 F304L
Bonnet	St.St. BSEN 10222-5 x2 CrNi 18-9 (1.4307) / ASME SA182 F304L
Seat	St.St. BSEN 10088-3 1.4307 / ASME SA479 304L
Seat Seal	Perlast or Kalrez seal
Disk	St.St. BSEN 10088-3 1.4307 / ASME SA479 304L
Stem	St.St. BSEN 10088-3 1.4307
Bellows	St.St. Type 316L
Back up Gland	Graphite